

H&G
RENOVATION SPECIAL
A refreshed Queenslander

Return to SPLENDOUR

A forward-thinking Brisbane couple transformed a tired Queenslander into a home that will impress for generations.

STORY *Jackie Bryggel* | STYLING *Kate Nixon*
PHOTOGRAPHY *Maree Homer*



VERANDAH *this page and opposite* The deep verandah includes a sitting area – a favourite with twins Georgie (left) and Meg as well as Bruno the cavoodle – and a dining zone near the kitchen. Patio setting, Far Pavilions. Scatter cushions in Paradise linen fabric, Utopia Goods. Plant and pot, Phoebe Stephens Flowers. The old kitchen table has been shifted outdoors and teamed with replica Eames chairs. Indoor/outdoor rug (opposite), Kova Lifestyle.

Smart buy: Istanbul pendant lights, \$140/each, Andrews Light Up.

For Where to Buy, see page 224.



H&G HOUSES

KITCHEN The focal point of the cooking zone is the Carrara marble-topped island bench. “I love the coolness of the marble but I quickly learned not to cut lemons anywhere near it,” says Margie. “We use the stainless-steel workbench behind for that.” Pendant lights, Koskela. Carrara marble splashback tiles, SNB Stone. Kitchen mixer with pull-out spray, Abey. Zip Hydrotap. Oven, Ilve. Joinery by Maytain Cabinets (throughout).

Smart buy: Summer counter stools, \$799/each, Naturally Cane.

DINING The dining table, which once belonged to Margie’s grandmother, looks right at home here. Existing chairs. Mirror, Kova Lifestyle. *For Where to Buy, see page 224.*



This is the life

Owner Margie Nasser says her home's wraparound verandah, which has views over the verdant garden to the Brisbane River, is constantly in use. "The verandah enjoys lovely cool breezes in summer and is warm and sunny in winter, so we're out here all the time," she says. Stacking doors leading from the living area to the verandah are mostly wide open too. "We take every opportunity to enjoy the garden."

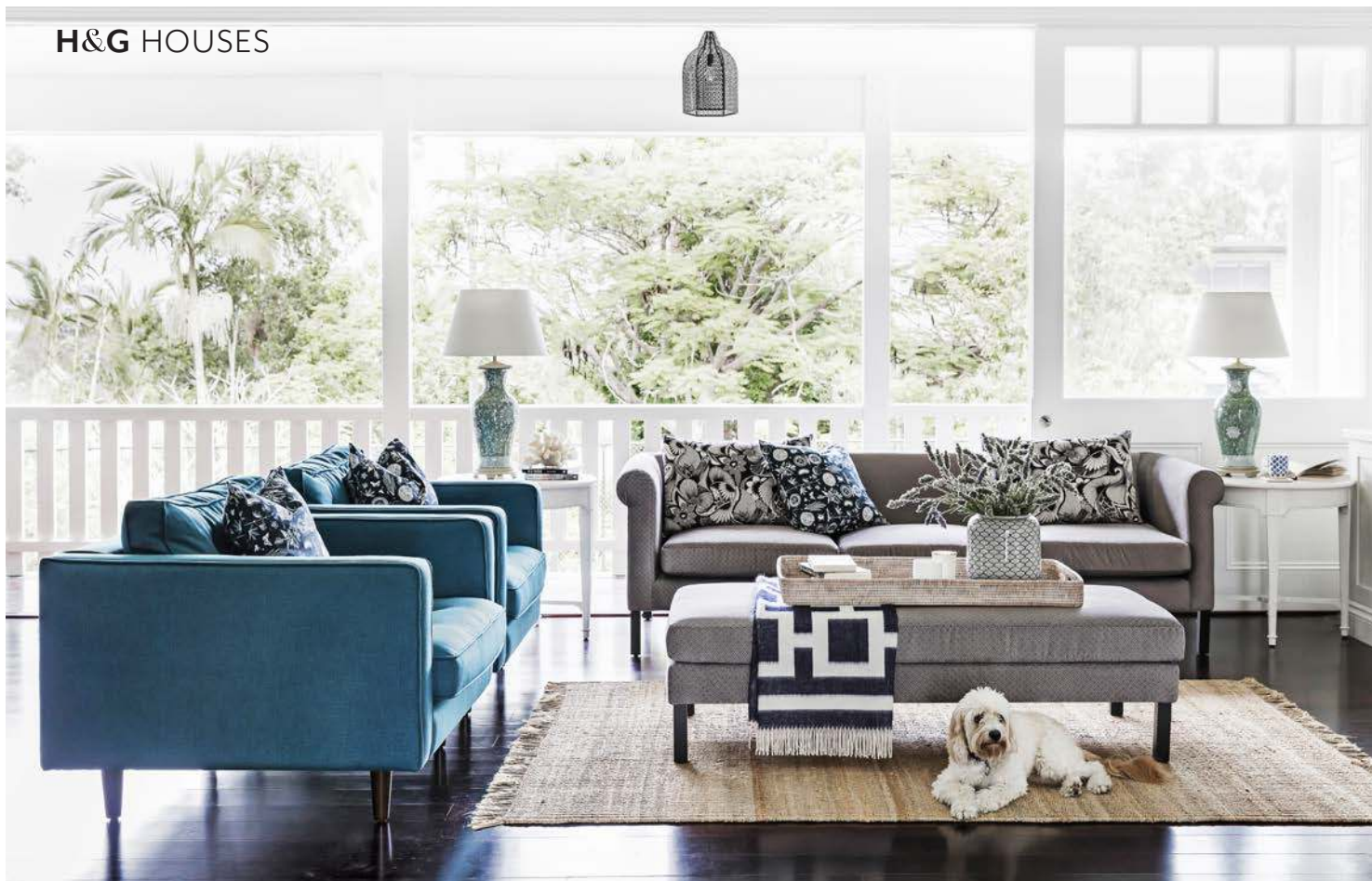


Perched on a hill high above the Brisbane River and enveloped by greenery, this beautifully refurbished 1920s Queenslander celebrates its past while embracing the future. Such are its charms that Margie and Simon Nasser fell in love with the house in its unrenovated form. Free-flowing in design and wonderfully roomy, it is perfectly suited to a family with four lively children - Fergus, 14, Molly, 12, and nine-year-old twins Georgie and Meg - and their beloved cavoodle Bruno.

Margie and Simon bought the property in 2009 and took their time planning the renovation that would transform it into their dream home. "The house had been well maintained over the years but the interior was tired," says Margie. "We thought we could tweak the layout to get it functioning more effectively overall too."

In 2014, Margie and Simon were ready to begin their extensive renovation. They enlisted builder Raoul Pohio of Blackline Builders to undertake the major works, which included the removal of walls to create an airy open-plan dining/living zone and a complete overhaul of the kitchen and bathrooms. The bedrooms were also reconfigured and a family room and guest suite constructed on the ground floor.

Next, they called on interior designer Claire Stevens, who incorporated many clever design ideas into the revamped layout and brought a stunning take on the timeless Hamptons style to every room of the home. Accents of watery blue - Margie's favourite hue - add just the right amount of colour inside and out. ▶



◀ “Margie wanted something really fresh,” says Claire. “The Hamptons look suits Queenslanders so well. It’s light and open but not too fussy or busy. And Margie loves blue and white, so once we had settled on that, we were good to go. It’s a relaxed colour combination that suits all seasons and won’t date.”

Margie concurs. “The house still has its lovely Queensland style but we’ve added our stamp.”

The final stage of the renovation was a garden makeover. Landscape architect Jeremy Ferrier created a lushly layered landscape with *Harpullia pendula*, tropical birch (*Betula nigra*) and viburnum hedging, as well as a sprinkling of fragrant favourites lavender, gardenia and jasmine. Thanks to a perennially mild climate and a verandah that wraps around the house on three sides, the Nassers are able to enjoy their new garden year-round.

Renovation complete, the family is delighted with what they have created. “It’s a really easy house to live in and one we hope to stay in always,” says Margie. “It’s such a lovely place to come home to every day.” ▶

Blackline Builders, Brisbane, Queensland; blacklinebuilders.com.au. **Claire Stevens Interior Design**, New Farm, Queensland; 0422 248 531 or clairestevensid.com.au.



Paint colours are reproduced as accurately as printing processes allow.

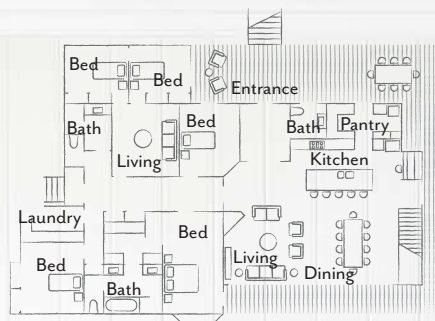
THE PALETTE

*Resene
Rice Cake*
interior, throughout

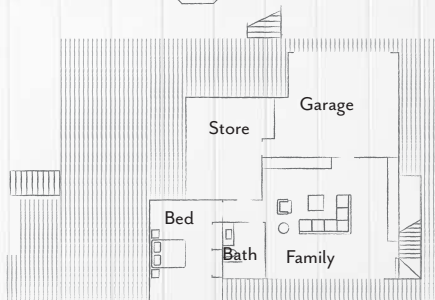
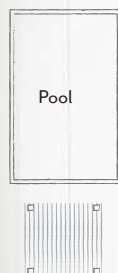
*Resene
Foundry*
kitchen island

*Resene Half
Friar Grey*
exterior

THE LAYOUT



FIRST FLOOR



GROUND FLOOR



MAIN BEDROOM The window seat is the ideal place to curl up with a book. Plantation shutters, Treefrog Shutters & Blinds. Bedlinen, Sheridan. Carpet, Carpet Call.

LIVING "The chocolate finish on the floorboards is just gorgeous," says Margie. "Unfortunately, it's also high maintenance. My Dyson Animal is my best friend." Sofa and ottoman, David Jones. Armchairs, Freedom (discontinued). Side tables and lamps, Villa Maison. Stacking doors by The Woodworkers Company. Rug, Armadillo&Co.

ENSUITE Claire designed the vanity to match the joinery in the kitchen. The tap is from Aldi. Marble mosaics, Stone & Tile Studio. Subway tiles, Amber Tiles.

Smart buy: Douglas wall light, \$199, Milton Lighting.

For Where to Buy, see page 224.



Before

Reno snapshot

Pivotal decision

The stacking doors that lead from the living/dining room to the verandah.

Unexpected blow-out

The eleventh-hour decision to divide the twins' bedroom into two single rooms.

Where to save

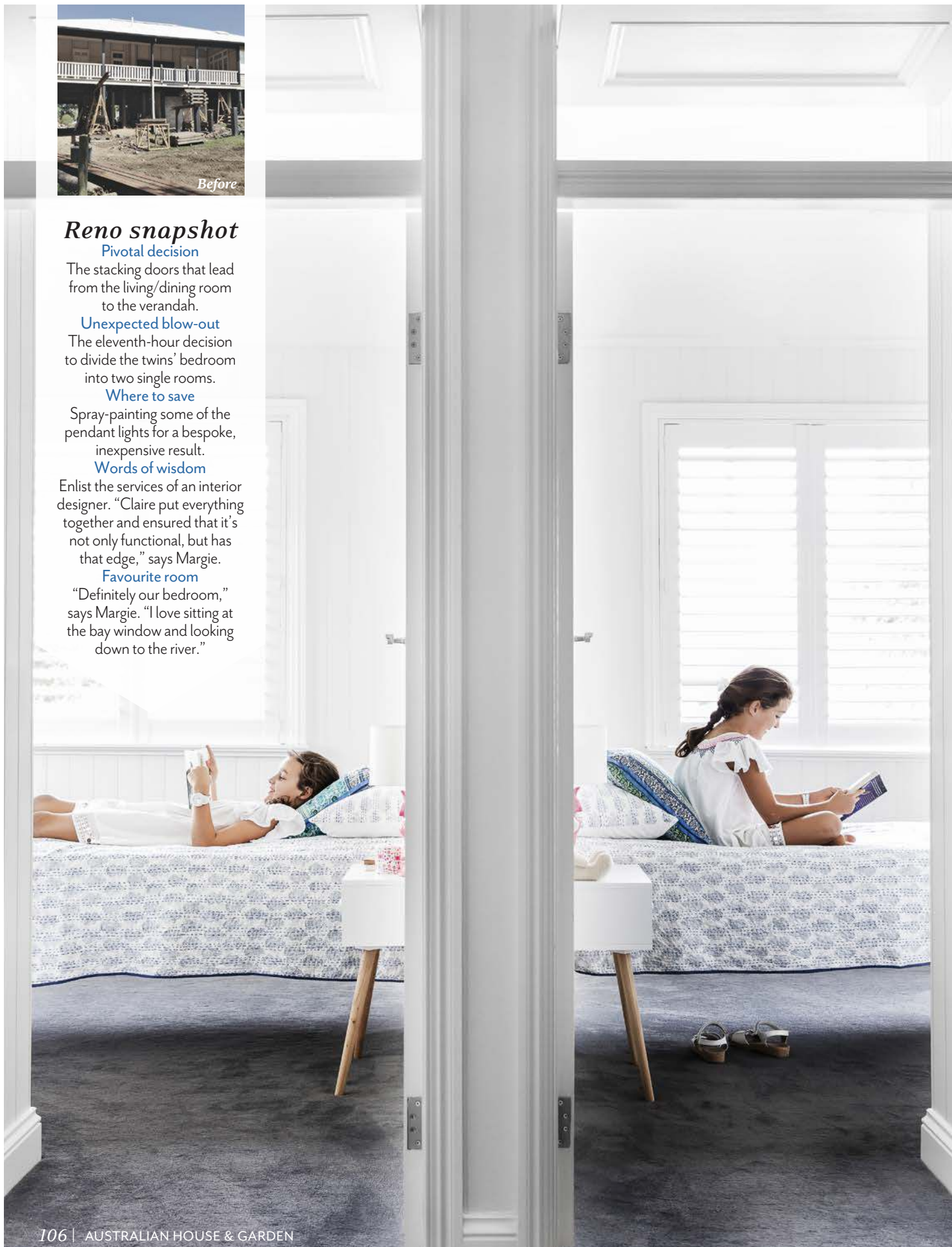
Spray-painting some of the pendant lights for a bespoke, inexpensive result.

Words of wisdom

Enlist the services of an interior designer. "Claire put everything together and ensured that it's not only functional, but has that edge," says Margie.

Favourite room

"Definitely our bedroom," says Margie. "I love sitting at the bay window and looking down to the river."



FEATURE PLANTS

BACKYARD

Evergreen frangipani
(*Plumeria obtusa*)

Tropical birch
(*Betula nigra*)

Harpullia pendula

Viburnum

Jasmine

GARDEN Planted beneath a window, a fragrant evergreen frangipani shares its scent with the occupants of the house. Landscaping by Jeremy Ferrier Landscape Architect. Pool by Liberty Pools. Cushions, Kova Lifestyle.

Smart buy: Högsten outdoor armchairs, \$149/each, Ikea.

TWINS' ROOMS The original plan was for Meg (left) and Georgie to share a room; instead, they have individual rooms connected by a 'twin door'. For *Where to Buy*, see page 224. **H&G**